

# RAB STD 5.5/6.5cv 1,70MT

80556

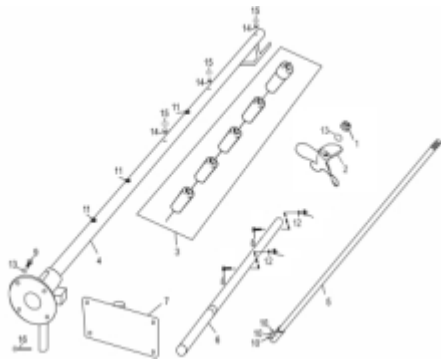


Comprimento (m)

1,7



Rabeta STD



<i>Ref.</i>	<i>Cód</i>	<i>Descrição</i>	<i>Qtd Prod</i>
1	818	PORCA M8- SX AUTO TR.	3
2	859	HELICE 3 PAS 5.5CV/6.5CV	1
3	860	CONJ MANCAIS (03 PEAS)	1
4	1955	TUNEL RABETA STD 1,70 MTS	1
5	426	EIXO DA RABETA 1,70 M	1
6	865	CABO COMANDO 5.5/6.5CV 4T	1
7	1957	SUP. FIX. RABETA BARCO	1
8	866	PARAF M8X1.25X65MM- ZN BR	2
9	1475	PARAF M8X1.25X20MM- ZN BR	4
10	868	PARAF M6X1X10MM- ZN PR	3
11	870	ENGRAXADEIRA 1/4 POL	3
12	819	ARRUELA LISA 5/16 POL	2
13	821	ARRUELA PRESSAO M8- ZN PR	5
16	1958	PINO TRAVA SUP RABETA STD	1

# RAB STD 6.5CV 4T 2.0MT

80558

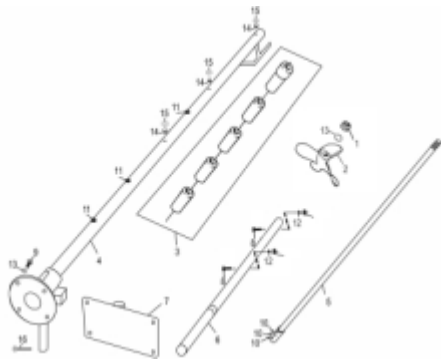


Comprimento (m)

2



Rabeta STD



<i>Ref.</i>	<i>Cód</i>	<i>Descrição</i>	<i>Qtd Prod</i>
1	818	PORCA M8- SX AUTO TR.	3
2	859	HELICE 3 PAS 5.5CV/6.5CV	1
3	860	CONJ MANCAIS (03 PEAS)	1
4	1956	TUNEL RABETA STD 2,20 MTS	1
5	1970	EIXO DA RABETA 2,20MTS	1
6	865	CABO COMANDO 5.5/6.5CV 4T	1
7	1957	SUP. FIX. RABETA BARCO	1
8	866	PARAF M8X1.25X65MM- ZN BR	2
9	1475	PARAF M8X1.25X20MM- ZN BR	4
10	868	PARAF M6X1X10MM- ZN PR	3
11	870	ENGRAXADEIRA 1/4 POL	3
12	819	ARRUELA LISA 5/16 POL	2
13	821	ARRUELA PRESSAO M8- ZN PR	5
16	1958	PINO TRAVA SUP RABETA STD	1

# RAB STD 5.5/6.5CV 2.20MT

80555



Comprimento (m)

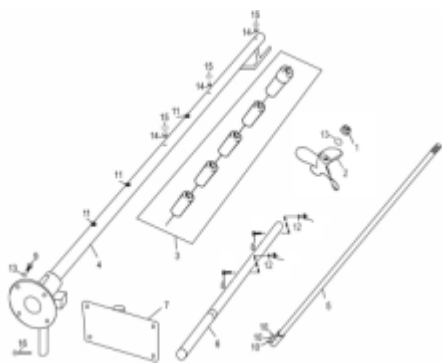
2,2



RAB STD 5.5/6.5CV 2.20MT  
80555

**BUFFALO**

Rabeta STD



Ref.	Cód	Descrição	Qtd Prod
1	818	PORCA M8- SX AUTO TR.	3
2	859	HELICE 3 PAS 5.5CV/6.5CV	1
3	1092	CONJ MANCAIS (04 PEAS)	1
4	1956	TUNEL RABETA STD 2,20 MTS	1
5	1970	EIXO DA RABETA 2,20MTS	1
6	865	CABO COMANDO 5.5/6.5CV 4T	1
7	1957	SUP. FIX. RABETA BARCO	1
8	866	PARAF M8X1.25X65MM- ZN BR	2
9	1475	PARAF M8X1.25X20MM- ZN BR	4
10	868	PARAF M6X1X10MM- ZN PR	3
11	870	ENGRAXADEIRA 1/4 POL	3
12	819	ARRUELA LISA 5/16 POL	2
13	821	ARRUELA PRESSAO M8- ZN PR	5
14	914	PARAF M6X1X12MM- ZN PR	3
15	440	PORCA SEX M6	3
16	1958	PINO TRAVA SUP RABETA STD	1